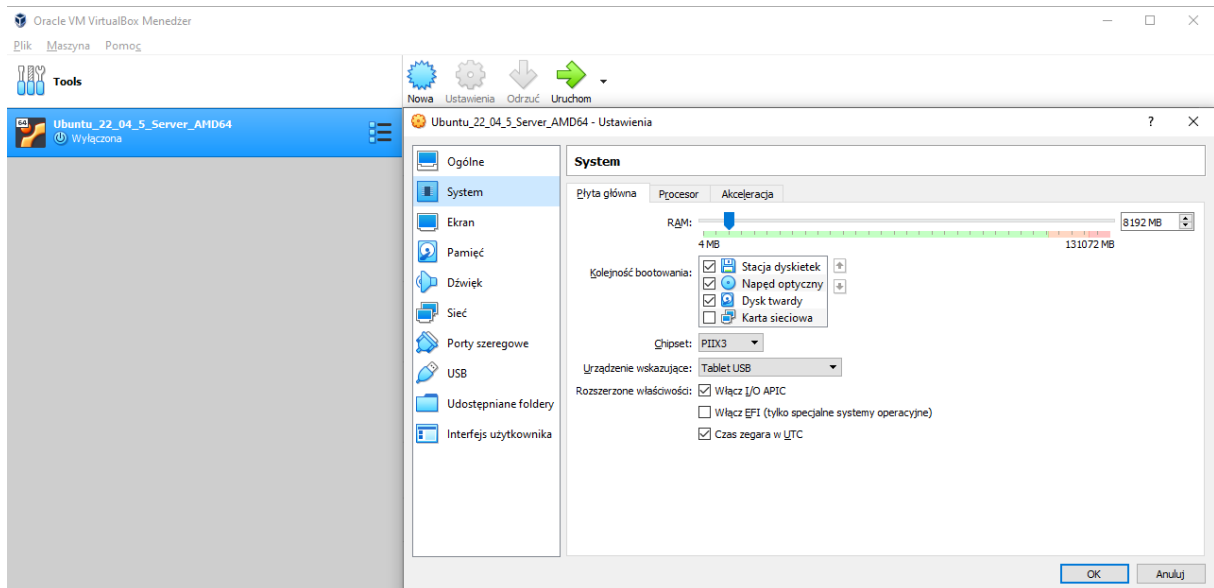
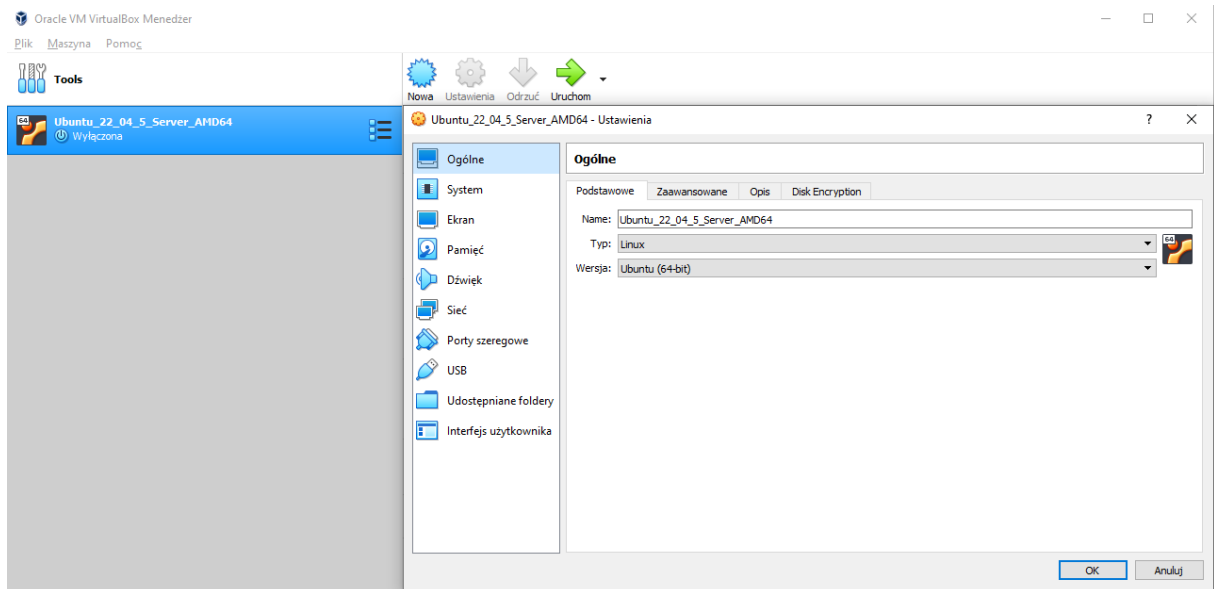
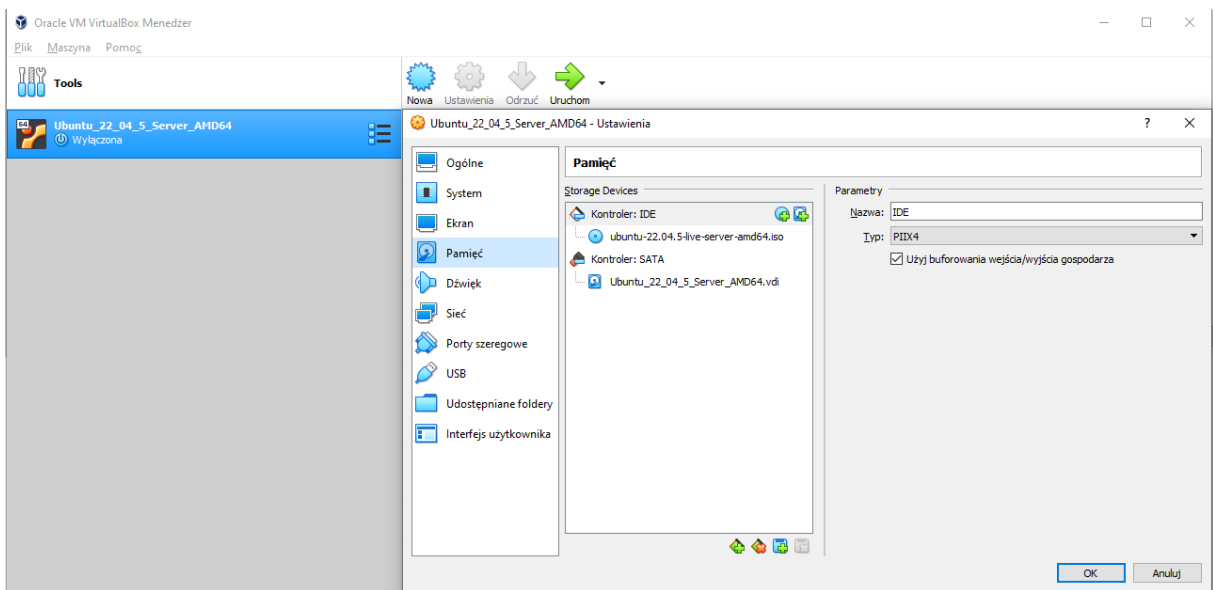
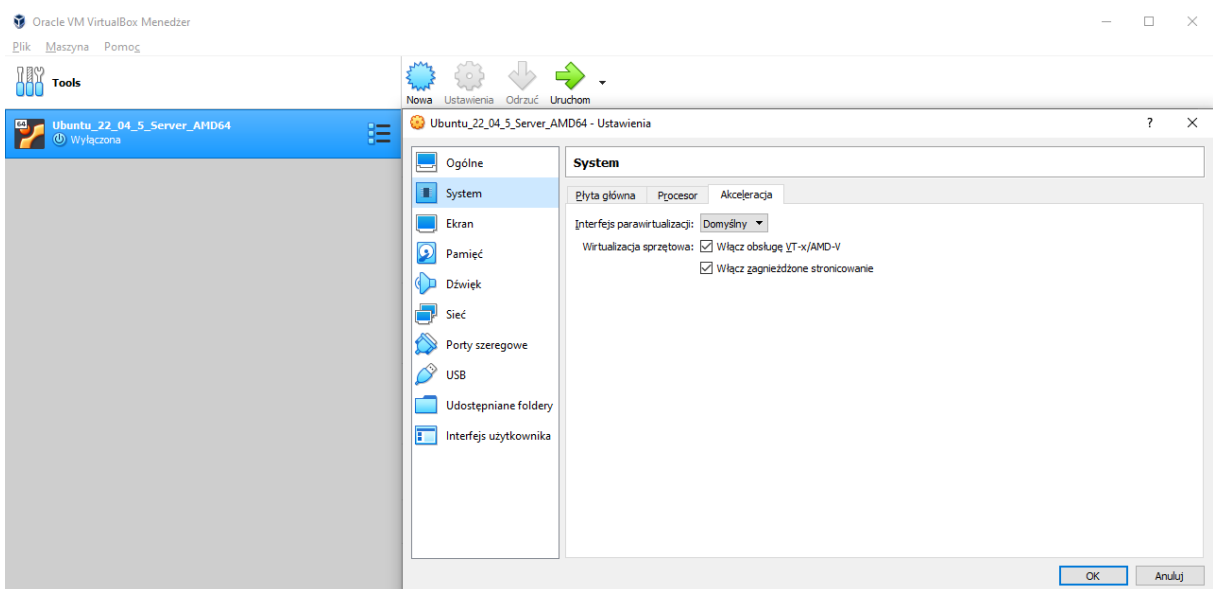
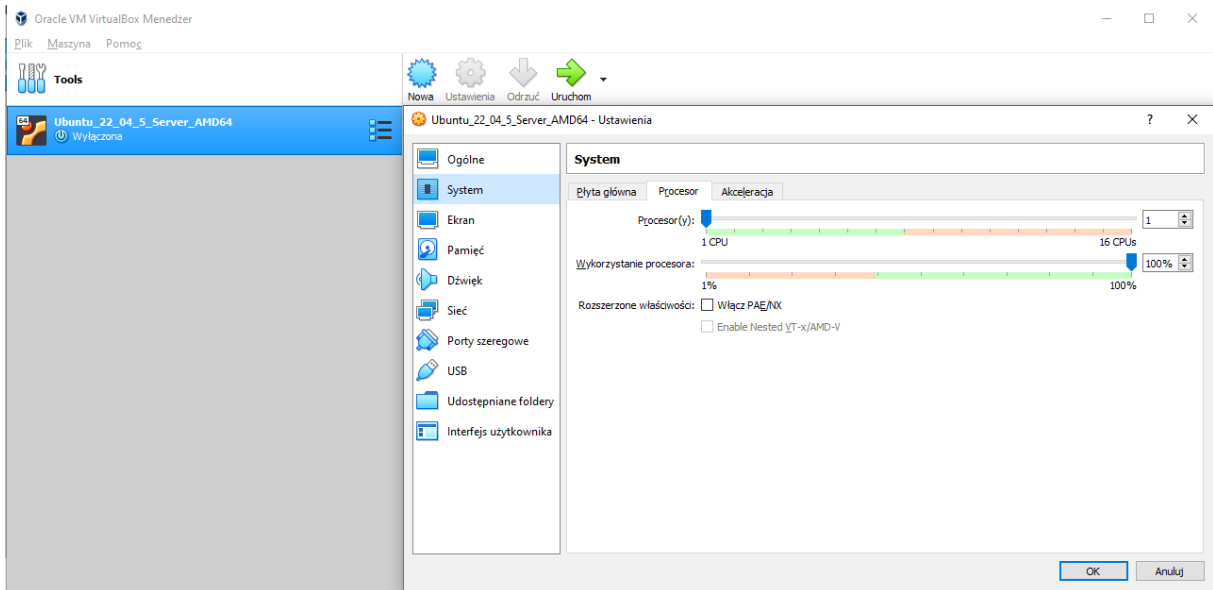


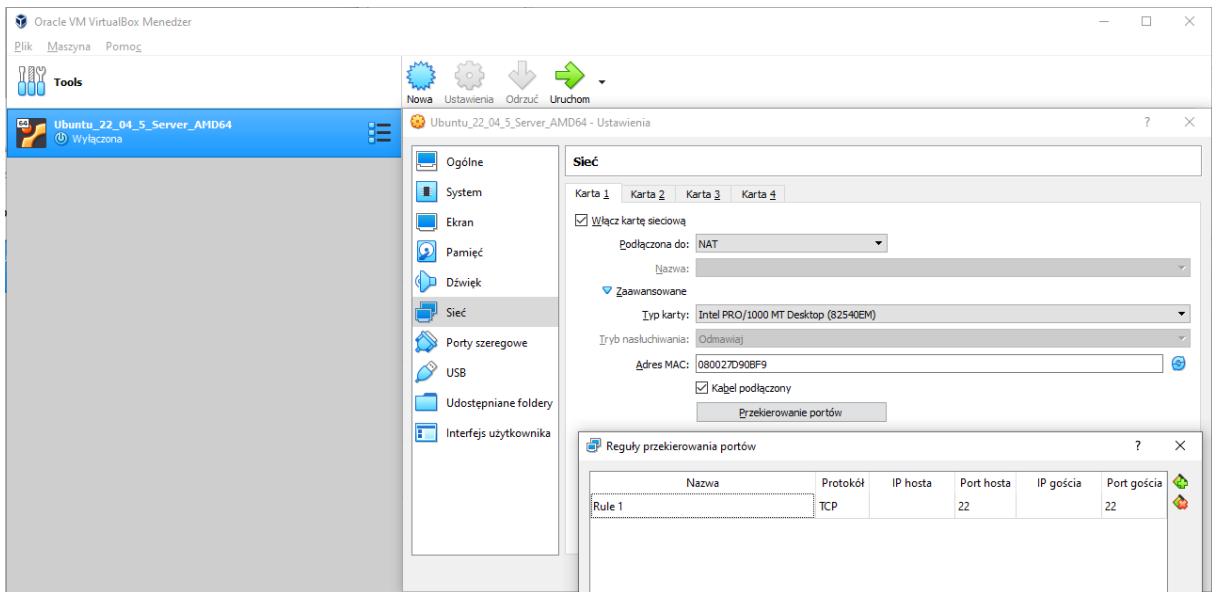
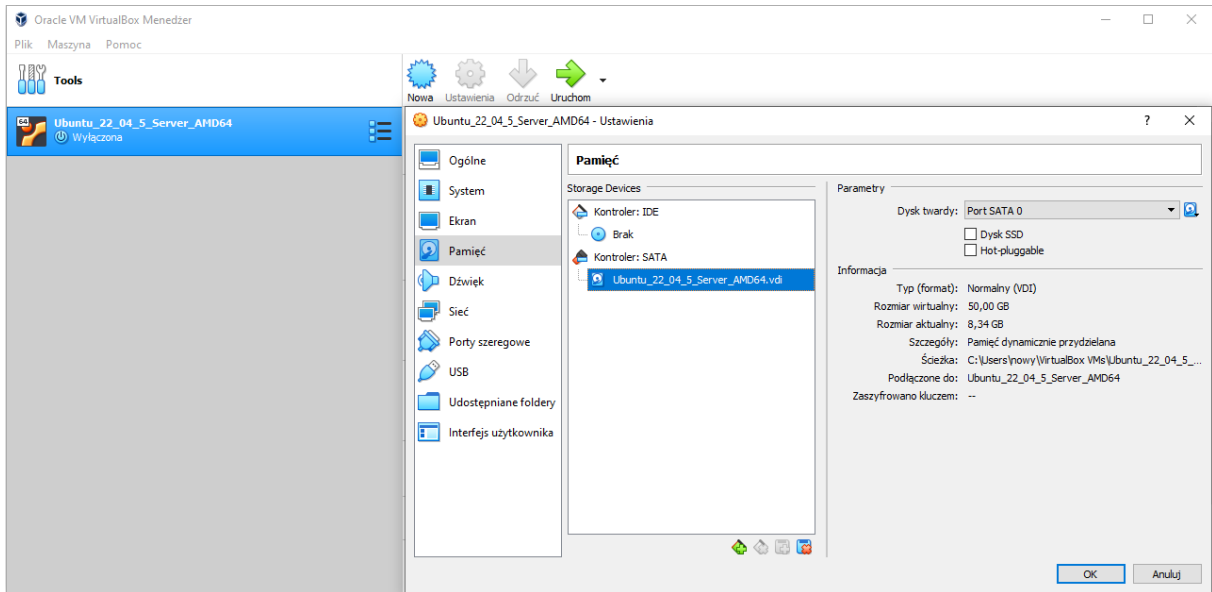
Instalacja systemu Linux – Ubuntu 22.04.5 AMD64

Iso: ubuntu-22.04.5-live-server-amd64.iso

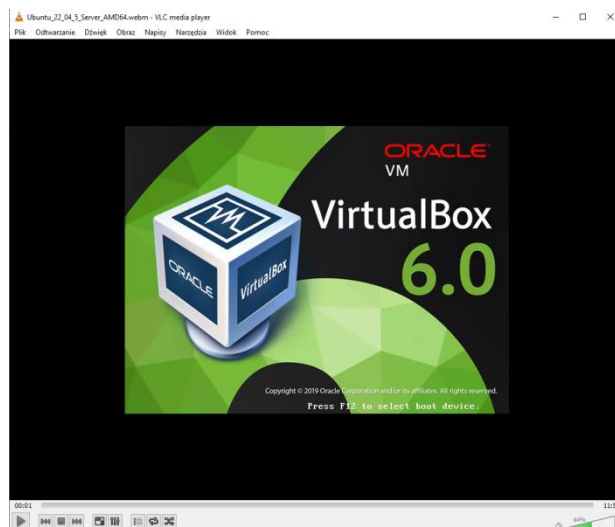
md5: 98b851805605def2f7f835e8a41c871a



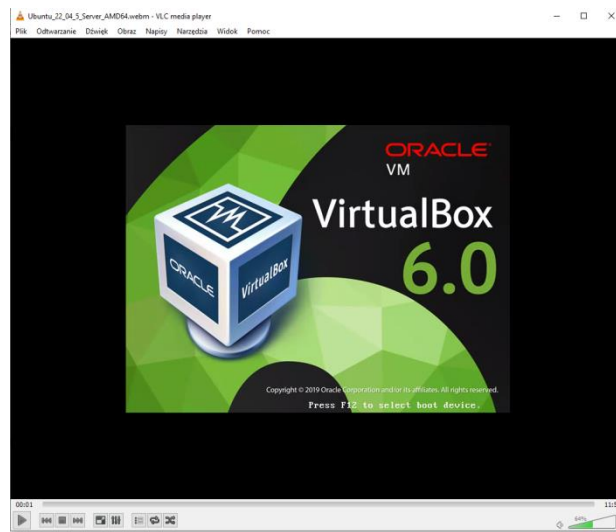




Kroki instalacji systemu: [Ubuntu_22_04_5_Server_AMD64_instalacja_systemu.webm](#)



Wstępna konfiguracja systemu: Ubuntu_22_04_5_Server_AMD64_wstepna_konfiguracja.webm



Opracowanie © 2025 Jarosław Szkoła